



CorePro LED PLC 2P



CorePro LED PLC 6.9W 840 2P G24d-2

CorePro LED PLC 2P integrates a LED light source into a traditional fluorescent form factor. This product is the ideal solution for uplamping in general lighting applications: it meets basic lighting requirements, offers significant energy savings, and is environmentally friendly.

Product data

General Information	
Cap-Base	G24d-2
Nominal lifetime	30,000 hour(s)
Switching Cycle	50,000
Lighting Technology	LED
Flux measurement reference	Sphere
Light Technical	
Color Code	840 [CCT of 4000K]
Beam Angle (Nom)	120 degree(s)
Luminous Flux	770 lm
Luminous Efficacy (rated) (Nom)	111 lm/W
Color Designation	Cool White (CW)
Correlated Color Temperature (Nom)	4000 K
Color Consistency	<6
Color rendering index (CRI)	82
LLMF At End Of Nominal Lifetime (Nom)	70 %
Flickering value (PstLM) - Flickering value as per EN 61000-3-3	1
Stroboscopic effect visibility measure (SVM)	0.4
Photobiological safety according to EN 62471	RG1

Operating and Electrical	
Input Frequency	50 to 60 Hz
Power Consumption	6.9 W
Lamp Current (Nom)	38 mA
Starting Time (Nom)	0.5 s
Warm-up time to 60% light	0.5 s
Power Factor (Fraction)	0.9
Voltage (Nom)	220-240 V
LED alternative to fluorescent lamp power	18 W
Inrush current at mains	2.78
Max. lamp no. on MCB B type 10A - Mains	264
Max. lamp no. on MCB B type 10A - EM ballast without Compensation Capacitor.	264
Max. lamp no. on MCB B type 10A - EM ballast with Compensation Capacitor.	-
Max. lamp no. on MCB B type 16A - Mains	422
Max. lamp no. on MCB B type 16A - EM ballast without Compensation Capacitor.	422
Max. lamp no. on MCB B type 16A - EM ballast with Compensation Capacitor.	-
Ballast Compatibility	EM/Mains

CorePro LED PLC 2P

Temperature

Ambient temperature range	-20 to +35 °C
T-Case Maximum (Nom)	75 °C

Controls and Dimming

Dimmable	No
----------	----

Mechanical and Housing

Bulb Finish	Frosted
Bulb Material	Plastic
Product Length	100 mm
Bulb Shape	PL-C

Approval and Application

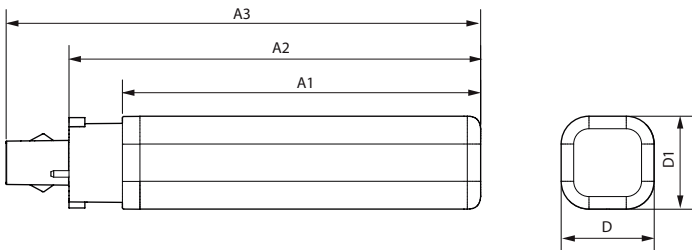
Energy Efficiency Class	E
Energy Saving Product	Yes
Approval Marks	RoHS compliance CE marking KEMA Keur certificate
Energy Consumption kWh/1000 h	7 kWh

EPREL Registration Number	1820628
CE mark	Yes
EU RoHS compliant	Yes

Product Data

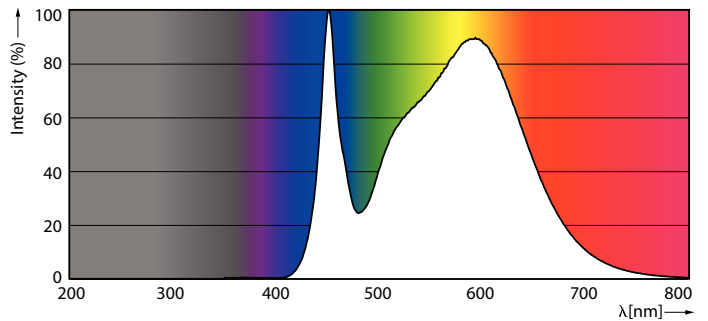
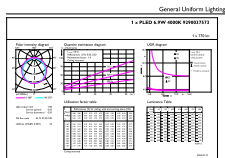
Order product name	CorePro LED PLC 6.9W 840 2P G24d-2
Full product name	CorePro LED PLC 6.9W 840 2P G24d-2
Full product code	872016928756300
Order code	929003757302
Material Nr. (12NC)	929003757302
Numerator - Quantity Per Pack	1
Net Weight (Piece)	0.075 kg
EAN/UPC - Product/Case	8720169287563
Numerator - Packs per outer box	10
EAN/UPC - Case	8720169287570

Dimensional drawing



Product	D1	D2	A1	A2	A3
CorePro LED PLC 6.9W 840 2P G24d-2	34 mm		129 mm	148 mm	171 mm

Photometric data

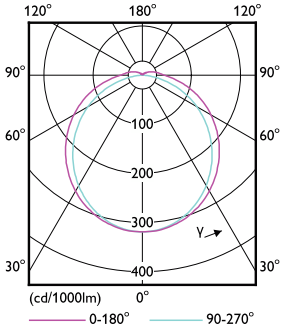


General uniform lighting - CorePro LED PLC 6.9W 840 2P G24d-2

Spectral Power Distribution Colour - CorePro LED PLC 6.9W 840 2P G24d-2

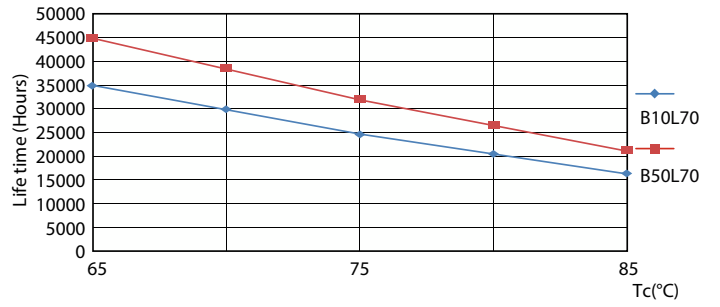
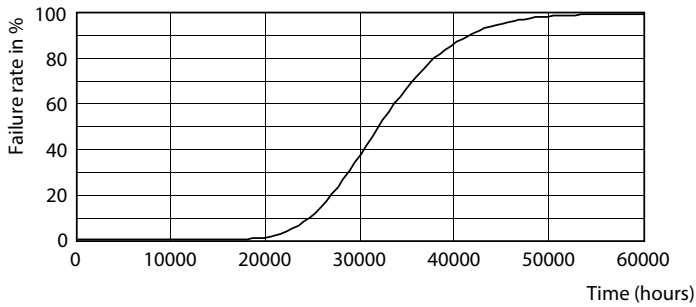
CorePro LED PLC 2P

Photometric data

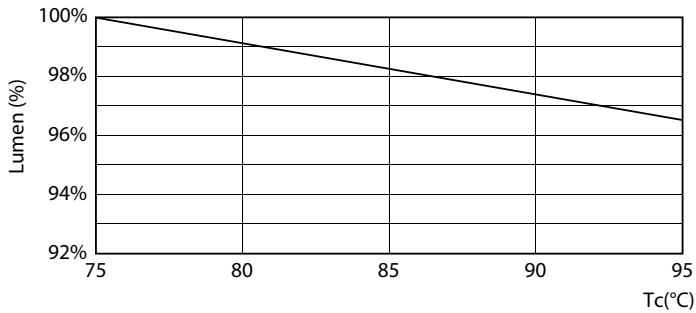


Light Distribution Diagram - CorePro LED PLC 6.9W 840 2P G24d-2

Lifetime

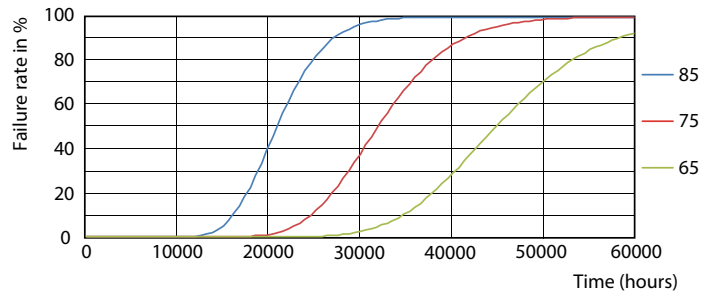


Life Expectancy Diagram



Lumen Maintenance Diagram - CorePro LED PLC 6.9W 840 2P G24d-2

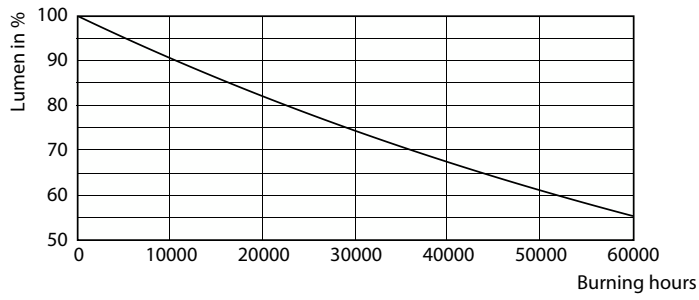
LifetimeVsTc



FailureRate

CorePro LED PLC 2P

Lifetime



Lumen Maintenance Diagram - CorePro LED PLC 6.9W 840 2P G24d-2

