

COMPRESSION COUPLER FOR COPPER-BONDED GROUND ROD, POINTED



CERTIFICATIONS



FEATURES

Threadless compression coupler for use with pointed copper-bonded ground rods

Inside of coupler is tapered so ground rod compresses during installation to form an irreversible conductive connection

SPECIFICATIONS

Table 1/2

Catalog Number	Article Number	Material	Ground Rod Diameter, Nominal	Length (L)	Unit Weight	Complies With
CC12F	158000	Silicon Bronze	1/2"	69.8 mm	0.13 kg	
BR12	156650	Brass	1/2"	70 mm	0.13 kg	
CC58	158010	Silicon Bronze	5/8"	69.8 mm	0.15 kg	IEC® EN 62561-2
CC34	158020	Silicon Bronze	3/4"	69.8 mm	0.2 kg	IEC® EN 62561-2

Table 2/2

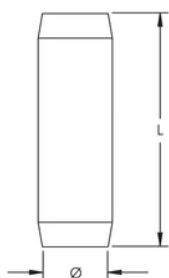
Catalog Number	Article Number	Certifications
CC12F	158000	cUL, UL, CSA, CSA-US

Catalog Number	Article Number	Certifications
BR12	156650	
CC58	158010	cUL, RUS, UL, CSA, CSA-US
CC34	158020	cUL, UL, CSA, CSA-US

ADDITIONAL PRODUCT DETAILS

IEC® EN 62561-2 supercedes EN 50164-2.

DIAGRAMS



WARNING

nVent products shall be installed and used only as indicated in nVent's product instruction sheets and training materials. Instruction sheets are available at www.nvent.com and from your nVent customer service representative. Improper installation, misuse, misapplication or other failure to completely follow nVent's instructions and warnings may cause product malfunction, property damage, serious bodily injury and death and/or void your warranty.

⚠ WARNING: This product can expose you to chemicals including lead, which is known to the State of California to cause cancer and birth defects or other reproductive harm. For more information go to www.P65Warnings.ca.gov.

North America

+1.800.753.9221

Option 1 – Customer Care

Option 2 – Technical Support

Europe

Netherlands:

+31 800-0200135

France:

+33 800 901 793

Europe

Germany:

800 1890272

Other Countries:

+31 13 5835404

APAC

Shanghai:

+ 86 21 2412 1618/19

Sydney:

+61 2 9751 8500



Our powerful portfolio of brands:
nVent.com CADDY ERICO HOFFMAN RAYCHEM SCHROFF
TRACER